

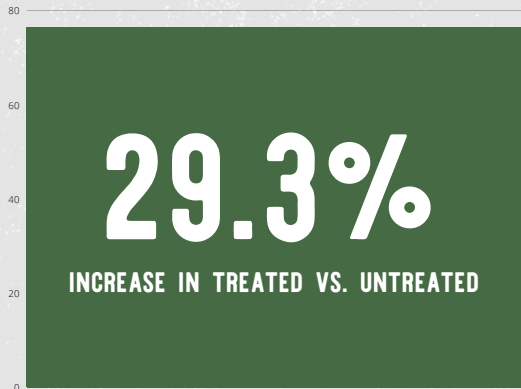
# CORN TEST PLOT



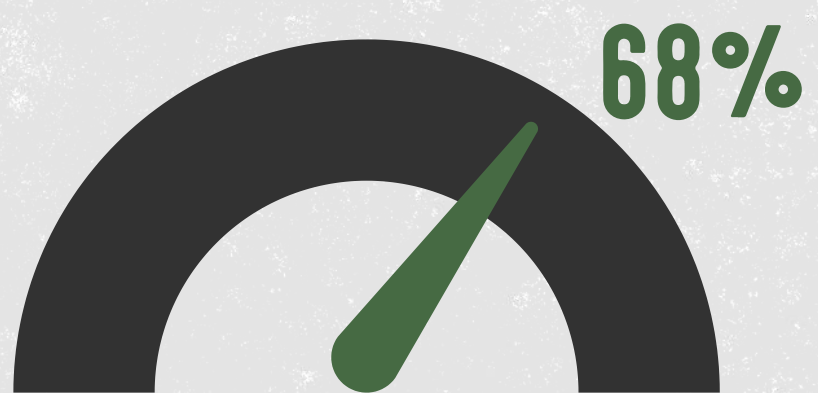


# ACROSS 6 SIDE-BY-SIDE TRIALS ON THIS PLOT...

## AVERAGE INCREASE IN MICROBIAL BIOMASS



## AVERAGE FUNGAL INCREASE



### WHAT IS MICROBIAL BIOMASS?

Microbial biomass is simply a measure of life in the soil - the biology or living microbes in your soil. This has a direct impact on soil health, plant health, and yield.

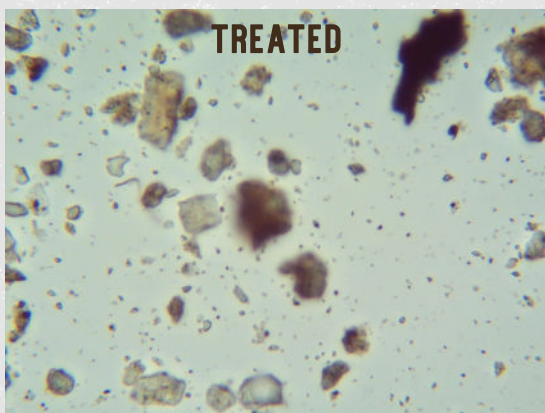
### WHAT IS THE FUNGAL TO BACTERIAL (F:B) RATIO?

The F:B ratio is a key measure of soil health. Industrial ag has degraded the health of our soils and as a result, almost all traditionally farmed acres are bacterial dominant, rather than fungal dominant, as soils are in forests or undisturbed prairie.

### WHY DO THEY MATTER?

Increased microbial activity in our soils better-enables the system to operate as Mother Nature intended. Microbes serve to release & unlock the nutrients in the soil, making them available to be taken up by the plants.

## MICROSCOPE FOOTAGE OF RHYZOGREEN TREATED VS. UNTREATED SOIL TAKEN FROM CORN PLOT



REAL SOIL MICROBIAL ACTIVITY!



SCAN WITH YOUR PHONE CAMERA TO LEARN MORE ABOUT MICROBIAL BIOMASS!



# RIOGEN™

SCAN WITH YOUR PHONE CAMERA TO SEE RESULTS FROM GROWERS AROUND THE COUNTRY!

